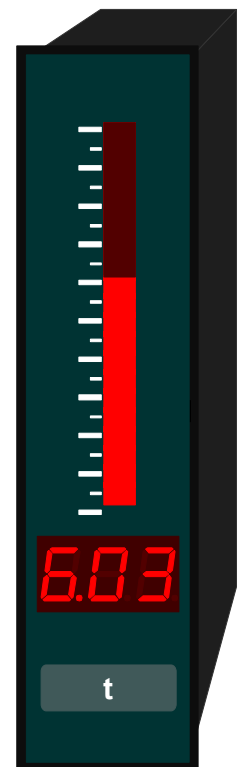


Bargraph vertical or horizontal without digital indication

BVO3, BHO3

- Without setpoints

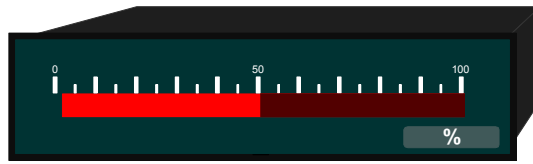


Bargraph vertical or horizontal with digital indication
3-digit

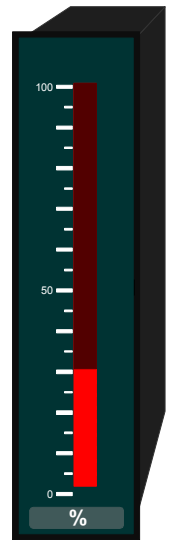
BHD2, BVD2

- without setpoints

Bargraph



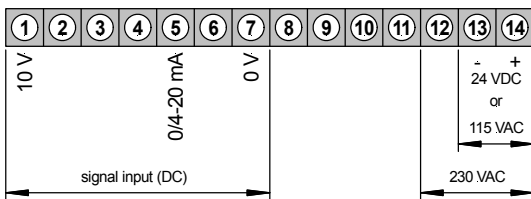
BHO



BVO

- Direct voltage
- Direct current

• **Direct voltage, direct current**



(Transmitter connections see last page)

Power supply 230/115 VAC (without digits, vertical)
(without digits, horizontal)

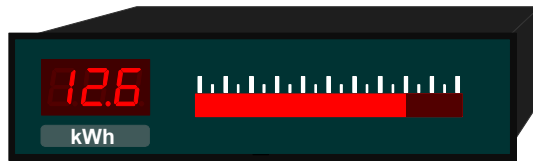
ORDER NUMBER
(without options)

BVO 3.001.310B
BHO 3.001.310B

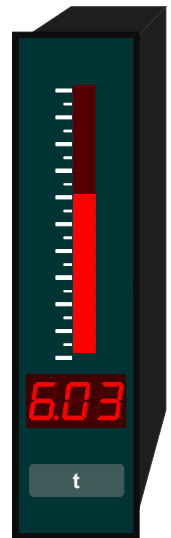
Power supply 24 VDC (galv. insulated) (without digits, vertical)
(without digits, horizontal)

BVO 3.001.370B
BHO 3.001.370B

- Direct voltage
- Direct current

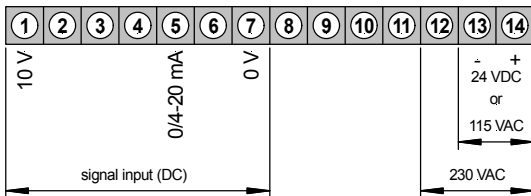


BHD



BVD

• **Direct voltage, direct current**



(Transmitter connections see last page)

Power supply 230/115 VAC (with digits, vertical)
(with digits, horizontal)

BVD 2.001.310B
BHD 2.001.310B

Power supply 24 VDC (galv. insulated) (with digits, vertical)
(with digits, horizontal)

BVD 2.001.370B
BHD 2.001.370B

OPTIONS

	BVO... Direct voltage	Additional price
		EUR
LED green	x	12,80
Protection IP54 at the front	x	6,15
Protection IP65 at the front (<i>see following table</i>)	x	28,10
Plug in terminal	x	12,25
Additional measuring inputs on demand	x	
Other power supplies on demand	x	
Dimension strips selectable	x	

• Settings ex work with protective system IP65, adjustable on rear side

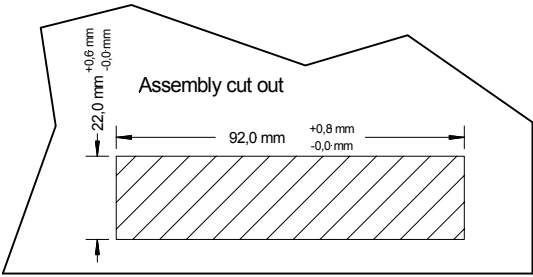
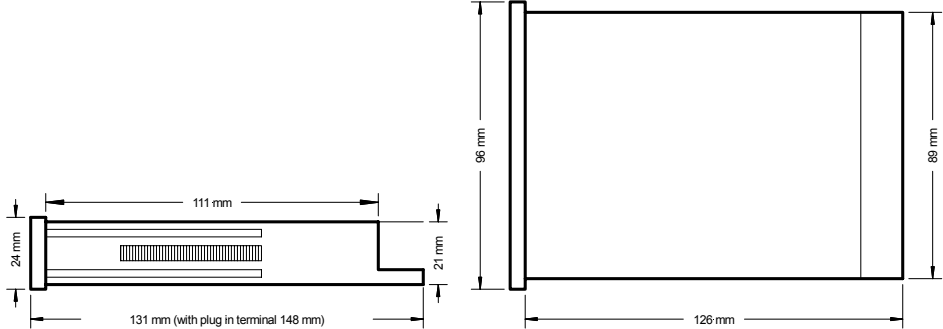
Settings deviating from the standard settings must be indicated in the order description.	Standard	As desired	BVO... Direckt voltage
	Decimal point	00,0	0,00
		ohne	x

Technical data

Dimensions	Housing Assembly cut out Fastening Housing material Protective system Weight Connection	B96 x H24 x T131 mm, including screw terminal (T=148 mm, including plug in terminal) 92.0 ^{+0.8} x 22.0 ^{+0.6} mm special quick plastic clamp proper to fix in wall thickness up to 50 mm PC/ABS-Blend, colour black, UL94V-0 at the front IP40 connection IP00 approx. 0,3 kg At the rear side via terminals up to 2.5 mm ²
Input	Measuring range Measuring span Input resistance	0-10 V, 0/4-20 mA – all ranges selectable via connection terminal -0.5...12 V / -1 mA...25 mA Offset adjustment supported by offset potentiometer Ri with 10 V = ~124 kΩ 20 mA = ~100 Ω
Accuracy	Resolution Measuring fault Temp. drift Measuring principles	-99 up to 999 and 20 segments or 30 segments for bargraph +/-1 digit 100 ppm/K Dual-Slope-Integration
Power unit	Supply voltage Power consumption	230/115 VAC +/- 10% (50-60 Hz), 24 VDC (+/-10%) galv. insulated approx.. 2 VA
Indication	Display Overflow Underflow Measuring rate Decimal point Dot indication	LED with 7 segments, 7 mm high, red 3-digit = indication 999 selectable with bargraph indication 20 segments or 30 segments without 7-segment indication EEE - - - 250 ms selectable via bridge selectable via bridge
Ambient conditions	Working temperature Soring temperature	0 up to + 60 °C -20 up to + 80°C

Technical data

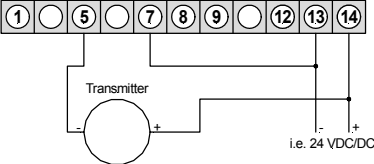
Housing:



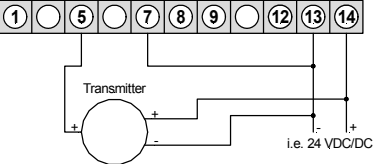
Connection diagrams

Bargraph with voltage and current input

2-wire: 4-20 mA



3-wire: 0-20 mA / 4-20 mA



3-wire: 0-10 V / 0-5 V / 0-1 V / 1-6 V

